

Solo Trombone 2 C Whimsical Winds

Jan Bosveld

Brillante $\text{♩} = 96$
10

11

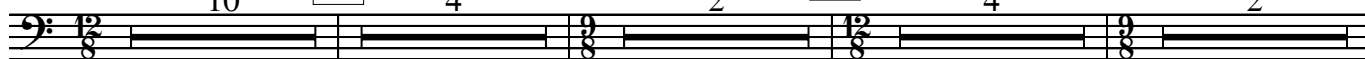
4

2

16

4

2



rall.

Resoluto $\text{♩} = 68$



f

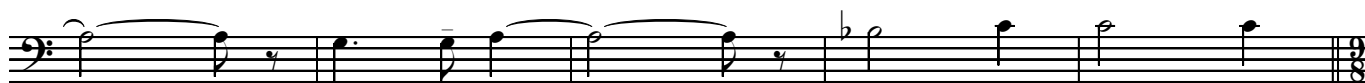
31

meno mosso



rall.

mf



rall.

37

Scherzando $\text{♩} = 96$



mf



47

3

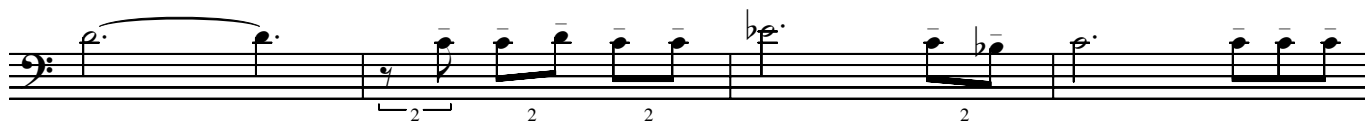


mf

65



f



72



Musical staff with bass clef, 12/8 time signature. The staff contains a sequence of eighth notes with fingerings 2, 2, 2. A crescendo hairpin is located below the staff.

78

Musical staff with bass clef, 12/8 time signature. It begins with a fingered rest (2) and a dynamic marking of *f*. The staff contains eighth notes with accents (^) and a dynamic marking of *sim.*

Musical staff with bass clef, 12/8 time signature. It contains eighth notes with accents (^) and a dynamic marking of *sim.*

87

Musical staff with bass clef, 12/8 time signature. It contains eighth notes with accents (^) and a dynamic marking of *mf*.

Musical staff with bass clef, 12/8 time signature. It contains eighth notes with accents (^) and a dynamic marking of *sim.*

93

Musical staff with bass clef, 12/8 time signature. It contains eighth notes with fingerings 2, 4, 2.

98

Musical staff with bass clef, 12/8 time signature. It contains eighth notes with fingerings 4 and a dynamic marking of *ff*.

109

Musical staff with bass clef, 12/8 time signature. It contains eighth notes with fingerings 3, 5.

Musical staff with bass clef, 12/8 time signature. It contains eighth notes with a dynamic marking of *mf*.

Musical staff with bass clef, 12/8 time signature. It contains eighth notes.

120

Musical staff with bass clef, 12/8 time signature. It contains eighth notes with a fingering of 3 and dynamic markings of *v*.

Musical staff with bass clef, 12/8 time signature. It contains eighth notes with dynamic markings of *v*, *v*, and an accent (^). A fingered rest (4) is at the end.

132

Musical notation for measures 132-138 in bass clef. Measure 132 starts with a forte (*f*) dynamic and a slur over a pair of notes. Subsequent measures feature eighth-note patterns with slurs and dynamic markings.

139

Musical notation for measures 139-152 in bass clef. Measure 139 begins with a half rest followed by eighth-note patterns. Measure 140 has a forte (*f*) dynamic. Measure 141 features a long note with a '2' above it. Measure 142 has a forte (*f*) dynamic. Measures 143-152 show complex rhythmic patterns with slurs and accents.

153

Musical notation for measures 153-168 in bass clef. Measure 153 starts with a fortissimo (*ff*) dynamic. Measures 154-168 continue with eighth-note patterns, slurs, and accents.

169

Musical notation for measures 169-178 in treble clef. Measure 169 starts with a fortissimo (*ff*) dynamic and a '2' below it. Measure 170 has a forte (*f*) dynamic. Measure 171 has a forte (*f*) dynamic. Measure 172 has a fortissimo (*ff*) dynamic. Measure 173 has a fortissimo (*ff*) dynamic. Measure 174 has a fortissimo (*ff*) dynamic. Measure 175 has a fortissimo (*ff*) dynamic. Measure 176 has a fortissimo (*ff*) dynamic. Measure 177 has a fortissimo (*ff*) dynamic. Measure 178 has a fortissimo (*ff*) dynamic.